

# SAFESMART SNAPSHOTS

CONSTRUCTION - AVIATION - MINING - DEFENCE - TRANSPORT

## ENHANCING SAFE ACCESS IN THE MARINE INDUSTRY

We are a proven designer and supplier of marine craft maintenance and access equipment to reach vessels in dry docks and floating pontoons.

**PAGE 6 - 7**

## WELCOME TO THE GAME CHANGER

### NON-DRILL EDGE PROTECTION

Checkout our new Non-drill edge protection products that are revolutionizing the simplicity of edge protection in many applications.

**PAGE 12 - 14**

## ALBA HOISTS

Renowned for performance, reliability, and ease of assembly!

**PAGE 15**

### TRADESHOW:

SARNZ 2024

**PAGE 3**

### SMARTROOF:

THE ROLLING SYSTEM

**PAGE 16 - 17**

**EDITION 3**  
SEPTEMBER 2024

[www.safesmartaccess.co.nz](http://www.safesmartaccess.co.nz)  
[sales@safesmartaccess.co.nz](mailto:sales@safesmartaccess.co.nz)

 **SAFESMART**  
**ACCESS**  
Reaching new heights



**Stefan Lidderd**  
Scaffold & Product Designer

FROM THE  
**DESIGNER**

When it comes to height access solutions, the design stage is always the most important from both a safety and cost-effectiveness perspective. At SafeSmart Access, we provide several professional advantages that can transform project outcomes.

While we stock a large range of 'off-the-shelf' products that solve access challenges across many industries, there will always be a need for customised solutions. When it comes to custom products and technical scaffolding projects, the design process is crucial.

I enjoy being on the design team at SafeSmart, as I get involved in designing world-class work platforms, bridges, and stair systems that are

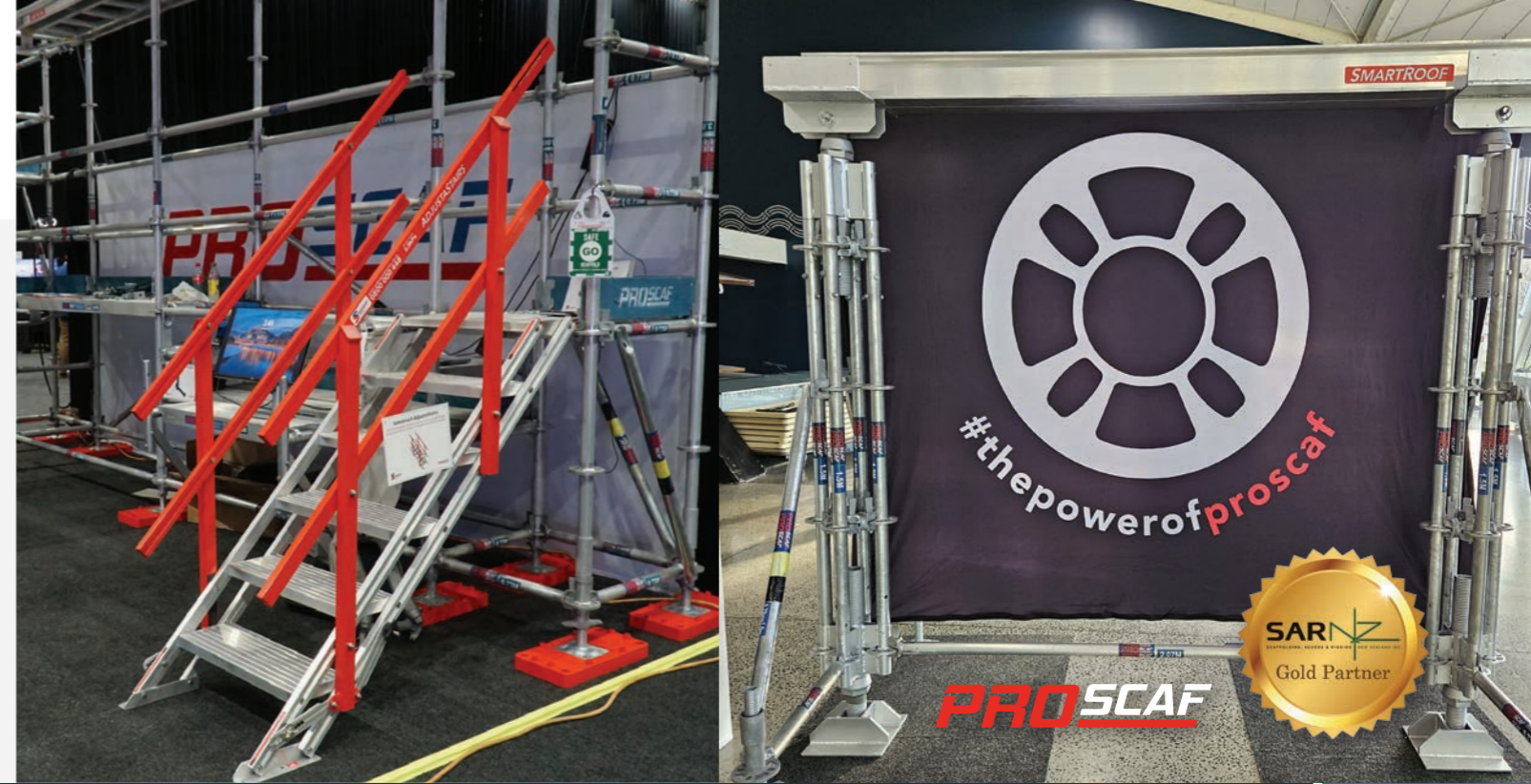
being used on the other side of the world. In my opinion, the product design methodology at SafeSmart is second to none in the access market. We focus on our products being user-friendly, efficient, and safe.

In the scaffolding market, I love working with companies to solve highly complex challenges while using minimal gear. We endeavour to produce effective scaffolding designs that minimise material waste and labour costs by using the latest world-class scaffolding software, which incorporates innovative features. One such feature allows our clients to access an interactive link with a 3D rendering of their design, giving them the ability to visualise their project. This ensures your project benefits from cutting-edge solutions that facilitate smoother workflows by improving accessibility and reducing delays.

Over my career, I have worked with many different scaffold systems and always maintain a strong attention to detail. I love working with the Proscaf system, as it is highly engineered and I have all the technical data at my fingertips, allowing me to understand what we can do with it immediately. There are also a couple of elements and small components that make it superior to other systems, such as the roofing system and the highest-rated diagonal braces. It just makes my life as a scaffold designer easier.

We've been working on some highly complex projects recently, including a 30-metre span SmartRoof. We look forward to sharing more on these complex projects as they unfold.

Choosing SafeSmart Access is a strategic investment that enhances safety, efficiency, and cost-effectiveness. Contact us today to discover how our scaffold design services can elevate your project's success.



DOWNLOAD THE **NEW** MASTER CATALOGUE



**SCAN CODE**

REQUEST A **FREE POSTED MASTER CATALOGUE!**

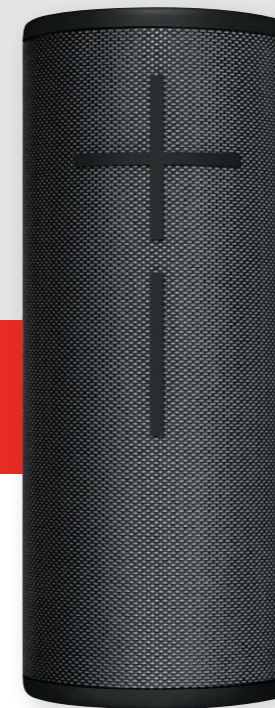
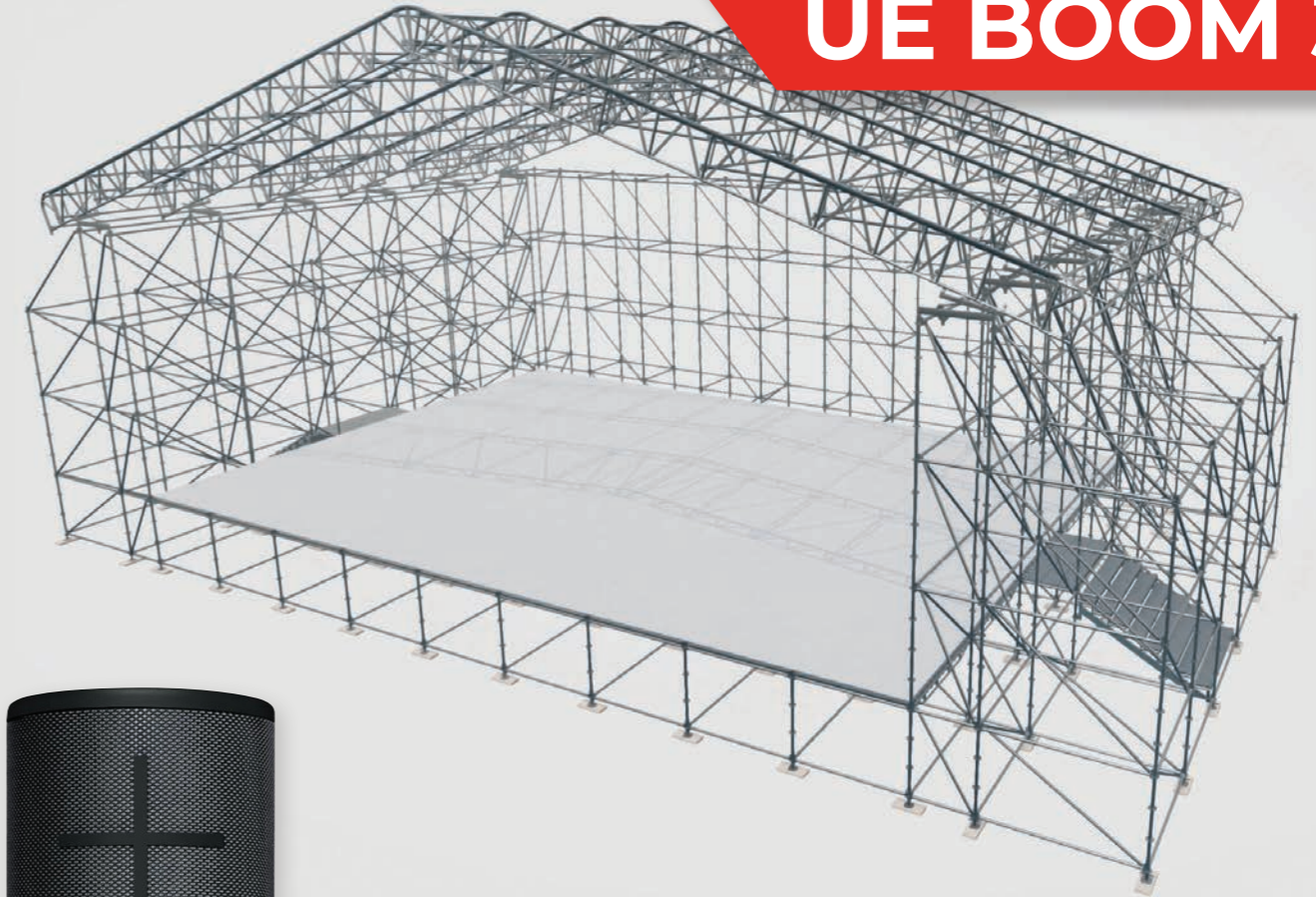


- Purchase and Rental Options
- Designed for Staging
- Compatible with Proscaf
- Engineered Scaffold Design Service Available

**WATCH VIDEO**



**GET A FREE UE BOOM 3**



**FREE UE BOOM 3**

For every complete stage rented or purchased

**FREE UE BOOM 3**  
**CODE: SSASUMMER**

*Valued at \$224 RRP (strictly while stock lasts).  
The minimum stage requirement is 20sqm or at our discretion.*



## GOT GRANDSTAND SEATING REQUIREMENTS?

Looking for a highly configurable temporary seating option?

Contact us with your requirements.



**SCAN CODE**

# EQUIPMENT DESIGNED FOR THE MARINE INDUSTRY

*We are a proven designer and supplier of marine craft maintenance and access equipment to reach vessels in dry docks and floating pontoons. We have designed and supplied platforms for various applications in the industry.*

SafeSmart Access have worked closely with the marine industry for over 20 years. We recognise the significance of safe access platforms and bridges for accessing challenging locations and carrying out maintenance work securely.

## Work Platforms:

SafeSmart Access offers the largest range of work platforms in New Zealand.

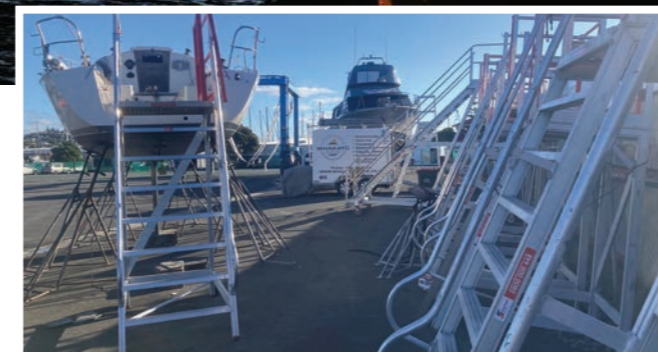
Our platforms are designed to provide safe, compliant, and efficient access for clients



working on their vessels while they are in the hardstand. Our goal is to eliminate incidents that occur from working at heights with the wrong equipment.

## Gangways and Bridges:

We specialise in manufacturing aluminum gangways for vessels and pontoons in New Zealand. Our gangways are made from marine-grade aluminum, designed for easy installation and longevity. We keep temporary gangways in stock and also offer custom long-term models.



## Stairs:

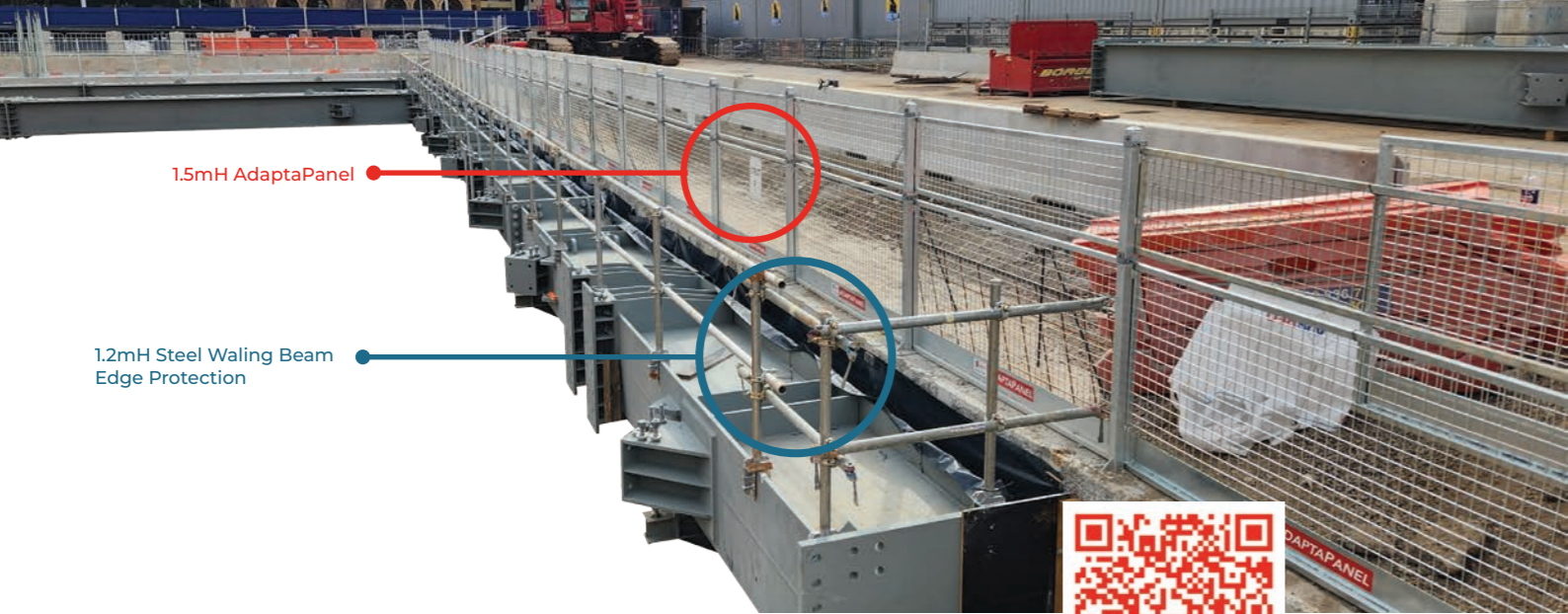
For safe, compliant and quick access to boats and other marine craft during maintenance. With minimal set up time, stairs can be deployed in different locations easily and quickly. Marine grade aluminium construction for weather resistance and professionally welded structural components mean many years of use.



## Custom Access:

SafeSmart Access has the capability to design and manufacture work platforms, stair sets, and other access solutions tailored to maritime craft. Send us your requirements and we'll take care of the rest!

Got a similar challenge?  
**Contact us** for a worldclass product and a worldclass, stress-free experience.



1.5mH AdaptaPanel

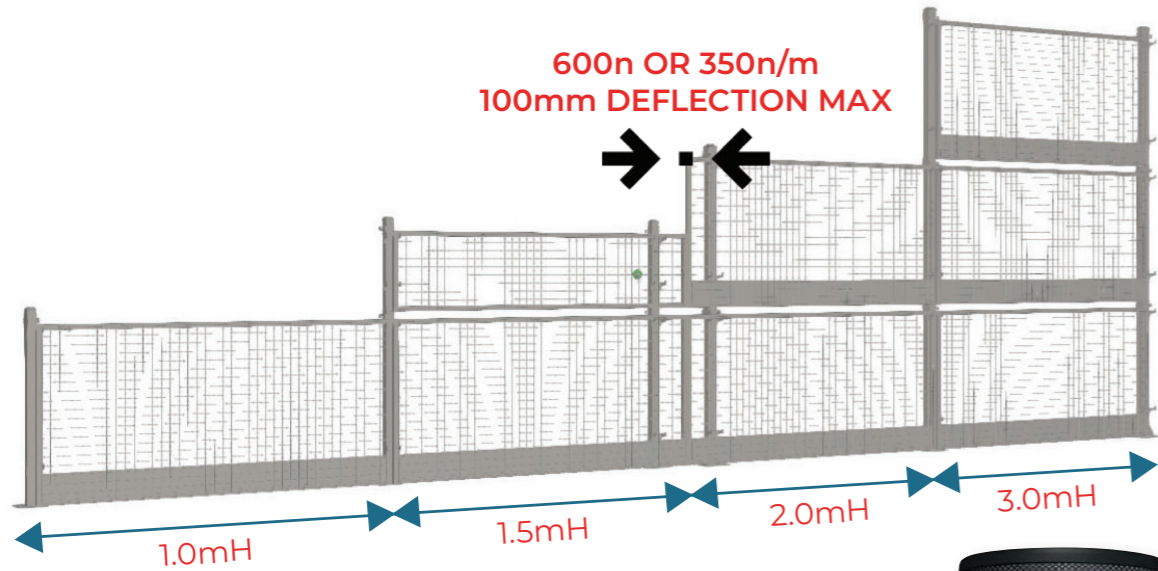
1.2mH Steel Waling Beam Edge Protection



## ADAPTAPANEL

ADAPTABILITY. FLEXIBILITY. VERSATILITY.

This edge protection system features a heavy-duty framed panel arrangement to withstand site conditions. Slide-in panels make AdaptaPanel fully modular and allows for ease of disassembly and redeployment at another site. Posts bolt to the slab edge, giving it market-leading structural integrity in comparison to traditional scaffolding-type edge protection systems.

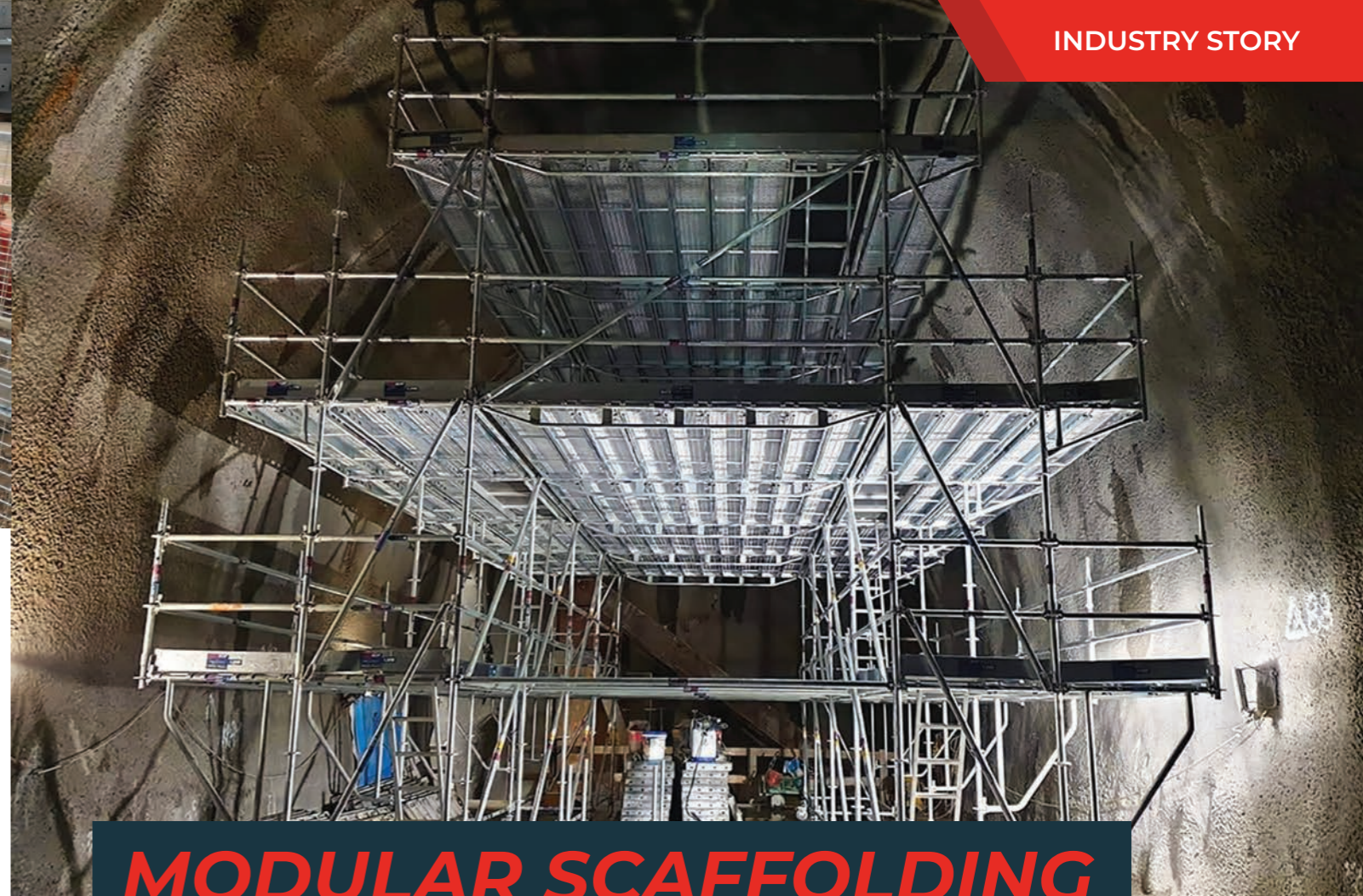


## ORDER

50m of AdaptaPanel & receive a

FREE UE BOOM 3  
CODE: **SSASUMMER**

Valued at \$224 RRP (strictly while stock lasts).



## MODULAR SCAFFOLDING Gantry for Tunnel Construction

The City Rail Link (CRL) is a 3.45km twin-tunnel underground rail link up to 42 metres below the Auckland city centre. It will transform the downtown Waitematā Station (Britomart) into a two-way through-station that better connects the city's rail network. The CRL allows the rail network to at least double the rail capacity, making it an essential part of Auckland's transport future.

Tunnelling challenges are many and varied, from ground conditions and water inflows to maintaining worker safety and minimizing disruption to the many crews on-site. In addition, the lengths of tunnels leading to the 25m cavern for the station made the Mercury Lane tunnel challenging.

The construction client needed access to the tunnel walls in order to install the finishing services. Typically, an EWP would be used for mobility and access. However, because of the complexity of access, crews could not use EWP access to gain the required heights, so the construction client needed another solution.

SafeSmart designed a mobile gantry platform made from Proscaf scaffolding that provided access to the tunnel walls from floor to ceiling. The scaffolding structure was modular and, most importantly, could be moved on castors within the tunnel.

Crews had access across three levels and could move the entire platform throughout the tunnel as needed. The design also included cantilevered sections, ladder access, and full surround guardrails and toeboards for increased safety.

Proscaf, as a modular and maneuverable solution, worked as designed with the installer Steadfast Scaffold stating, 'Just goes to show what can be produced when you know what you're doing with the gear.'

If you need help with your next scaffolding project, get in touch with the proscaf experts at SafeSmart. We can provide you with the best possible solution for your needs.

# GET DOUBLE REWARDS POINTS IN OCTOBER

Automatically applied on all orders according to our T&C's 'View T&C's online

## Earn Loyalty Point Dollars



Reward Point Dollars are earned with every dollar you spend with us and can be redeemed for products in our Rewards Points portal\*

\*Rewards points are issued based on the dollar amount of every invoice paid on time and according to our trading terms.

## Earn Status Points



Status Points are earned of every dollar spent with us and accumulate to determine what status tier you are on. Each tier has epic offerings and benefits associated to them including bonus reward dollars, exclusive deals, and free services like scaffold designs.



**SCAN CODE**  
JOIN OUR LOYALTY PROGRAM TODAY



**PROSCAF**

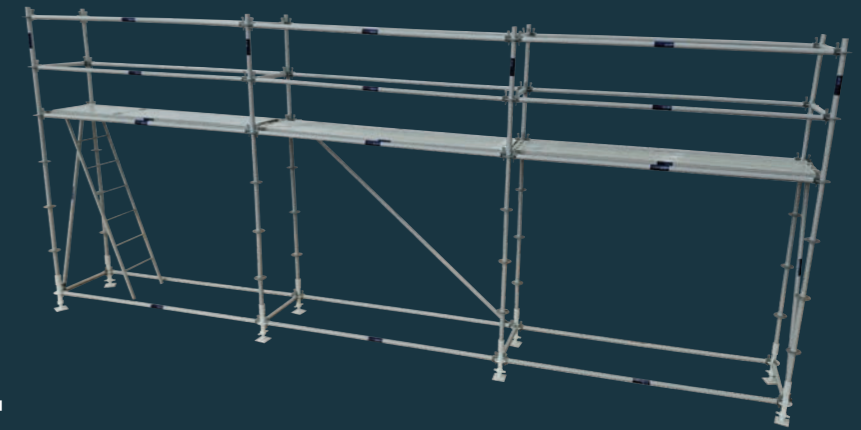


# MAKE YOUR OWN MODEL SET

## BRAND NEW PRODUCT!

This built-to-scale model scaffold kit consists of three 2.57m long bays, complete with bracing, an access deck and jacks. Make whatever structure you want by building it up just as you would build up Proscaf!

Buy it as a gift or for planning your scaffold jobs!



**SCAN CODE**  
TO VIEW ONLINE



**PROSCAF**  
*Effortlessly Simple. Infinitely Versatile.*



**SCAN CODE**  
REQUEST A FREE POSTED PROSCAF CATALOGUE!



# SAFETY TRANSFORMED



## NON-DRILL HANDRAIL SYSTEM

Welcome to the game-changer: NON-DRILL Temporary to Permanent handrail system. It simplifies the installation of edge protection railings using proprietary posts and scaffolding components, providing a fast, reliable solution for various construction settings.

### HOW IT WORKS:

- 1. Easy Start:** Begins with common scaffolding components for quick, temporary handrail setups.
- 2. Simple Transition:** Converts to a permanent handrail system with minimal steps - lean, insert, secure, and grout.
- 3. Secure Finish:** After setting the mid rail and top rail, remove temporary supports for a sturdy, long-lasting handrail.

### WHY IT STANDS OUT:

- Versatile:** Ideal for bridges, staircases, and anywhere a live edge is encountered between construction crews to the public.
- Efficient:** Saves on time, labour, and materials.
- Cost-Effective:** Reduces overall project expenses without compromising safety.

The NON-DRILL system is more than just a safety feature; it's an innovative approach to construction challenges, offering a blend of efficiency, versatility, and reliability. It's shaping up to be an essential tool in modern construction, ensuring projects stay safe and streamlined.



## SCAN CODE

Watch our installation video and get in touch with one of our team members for an on-site demo!

## DO YOU HAVE A CONTAINER EDGE PROTECTION REQUIREMENT?

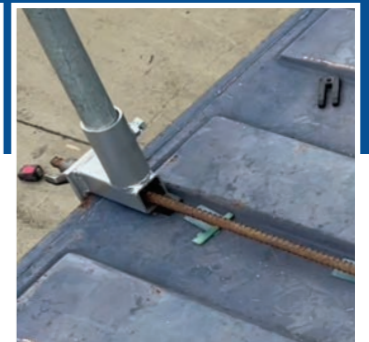
# NON-DRILL CONTAINER EDGE PROTECTION

Introducing the revolutionary NON-DRILL container edge protection system. This innovative solution eliminates traditional drilling methods required for conventional container edge protection systems.



## SCAN CODE

TO WATCH THE NON-DRILL CONTAINER EDGE PROTECTION INSTALLATION VIDEO



Renowned for **performance, reliability, and ease** of assembly!

# NEW RELEASE



## WALKWAY BRACKETS

This new and innovative system utilises standard NON-DRILL components, and fabricates cantilevered walkways with no compromises on safety. The NON-DRILL Walkway System complies with **AS 1657:2018**, the adjustable post/brace bracket creates walkways of up to 800mmW.



## FEATURES

- Uses standard NON-DRILL components to create cantilevered walkways.
- External handrail height up to 1000mmH.
- Adjustable Post/Brace bracket to create walkways up to 800mmW
- Minimum concrete MPa to be 32 MPa
- Anchor Options: 2.5t/5t (one anchor, M16/M20 ferrules.
- Applications: Precast Walls, Retaining Walls, and Capping Beams.

## MATERIAL HOISTS

The MC range hoists material up to 2000 kg in construction and restoration projects at 250m high.



## PASSENGER & MATERIAL TRANSPORT PLATFORMS

A large range of platforms (PT) with semi-open cabin, designed to hoist passengers and materials with different load capacity in order to adapt to various settings and heights of buildings.

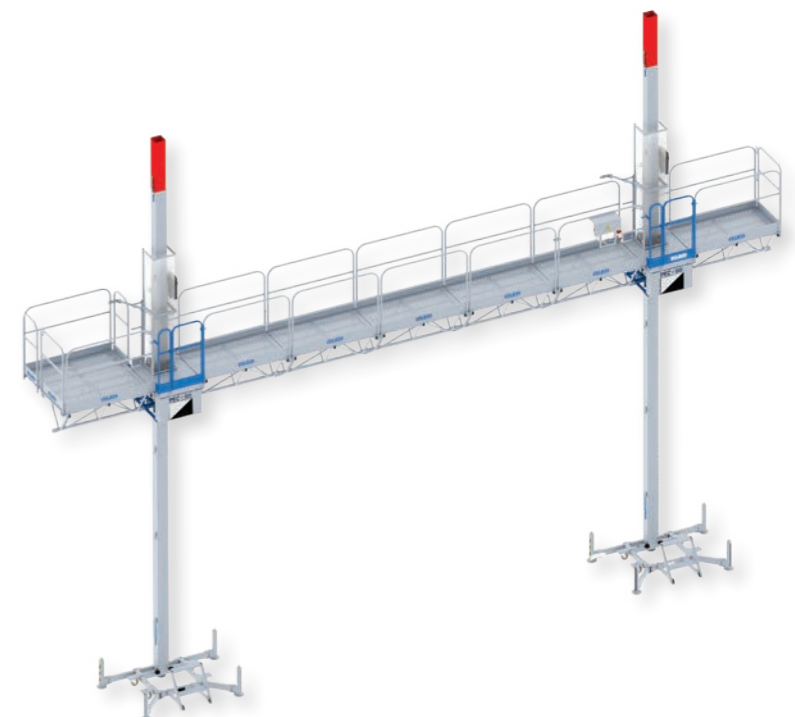


## MAST CLIMBERS

The PEC range work platforms are the perfect solution for rehabilitation works or façade closings and covering a building perimeter.



**EXPLORE RANGE ONLINE AND ENQUIRE**





# SAFESMART ACCESS ROLLING SMARTROOF

## ELEVATE YOUR PROJECTS WITH SMARTROOF: THE ULTIMATE TEMPORARY SCAFFOLD ROOF SOLUTION

Construction companies are looking for innovative ways to reduce their schedules, reduce working at height risks and reduce cost.

The scaffold contractors are trying to be competitive while maintaining sustainable margins.

We worked with construction companies and scaffold contractors to produce a temporary roofing system that can be built on the ground and craned into place, moved across the project on its unique tracking system and installed in a variety of ways to allow for crane access right across a project.

We often hear comments like "This is what the construction companies needed years ago, so they could crane products in." Our approach to scaffolding is innovation and we believe the SmartRoof system is a prime example of innovation in scaffold temporary roofs. So whether you're working on a renovation, restoration, or new build, SmartRoof offers the perfect solution to keep your project on track and your site safe.



## The Proscaf SmartRoof Advantage:

Designed and engineered by SafeSmart Access, The SmartRoof temporary roof system has been developed and improved over 10 years to create a versatile, easy-to-use solution.

Some of the characteristics are:

**Weather Protection:** Using a high-strength Ripstop polyester decitex canopy, the SmartRoof is designed to handle the challenges of any project and keep the weather off, providing reliable temporary roof protection throughout the duration of your project. The Keder rails on the SmartRoof system have a plastic joiner to ensure weather tightness and no leakage on the joins, unlike other systems.

**Ease of Installation:** The Keder roof system means the installation can be carried out on a laydown site and craned into place. The polyester canopy slides up and over using the SmartRoof roller, reducing time spent at height during installation and ensuring that your scaffold roof is both efficient and secure. The roller brackets and I-beam addition also provide installation benefits, including building at one end and pushing out the SmartRoof modules one by one.

**Lightweight:** The aluminum truss and bracing system increases the speed of installation over traditional roof bracing methods. The modular quick-lock aluminum braces provide a lightweight and simple construction process, making the Keder roof system an ideal choice for fast, safe assembly. The SmartRoof system also uses standard Proscaf trusses, which means these can be used for other projects when the SmartRoof system is not being used.

**Reusable:** The canvas system allows the contractor to reuse the SmartRoof on multiple projects. This reusability not only offers significant cost savings but also reduces plastic waste on construction sites, aligning with sustainable practices and offering an environmentally-friendly solution for temporary scaffold roofs.

**Engineered:** The SmartRoof comes with a pre-engineered data package for Australian and New Zealand weather conditions, allowing contractors to have their Keder roof system engineered for their sites faster and more economically, ensuring a perfect fit for every project. Our in-house scaffold designer can help solve complex roof requirements and provide detailed plans to follow.

## More Possibilities with the Rolling SmartRoof:

The rolling SmartRoof uses standard SmartRoof components, yet with the help of engineered Aluminium SmartRoof I-Beams and SmartRoof wheel carriages, it can roll along any building length.

Advantages of The Rolling SmartRoof:

- Significantly reduces the complexity and risks during installation.
- Allows the SmartRoof to be moved along the scaffolding structure without the need for complete dismantling.
- Perfect for projects that require materials and equipment to be craned into site whilst still needing weather protection.
- SmartRoof Aluminium I-Beams can be used for other applications.
- Faster installation.

If you are interested in finding out more about rolling roof methodology that results in time and risk savings, then please reach out.

## SmartRoof: A Sustainable Choice

In addition to its practical benefits, SmartRoof is also an environmentally friendly choice. The Keder roof system's reusable components reduce waste, aligning with sustainable construction practices. This makes SmartRoof not just a smart choice for your project, but also a responsible one.

Want to find out more or get a quote? Have a chat to our team on **0800 000 448** or [sales@safesmartaccess.co.nz](mailto:sales@safesmartaccess.co.nz).

# SIMPLIFY YOUR ROOF ACCESS USING ADJUSTASTAIRS



## Tired of struggling to lift long loads onto a rooftop with a ladder?

Look no further than AdjustaStairs! Whether you're working on maintenance, installations, or simply enjoying a rooftop view, AdjustaStairs is your go-to solution for safe and reliable access.

**Versatile Design:** Perfect for any rooftop up to 4mH, AdjustaStairs adapts to various heights and angles to work with any project.

**Safety First:** Built with toughened, marine grade Aluminium - they're rated to take the load.

**Easy-to-use:** Our user-friendly design means you can set up and adjust in no time. More efficiency means more time for what really matters!

## Work Smarter with AdjustaStairs!

### LADDERS

- ✗ Awkward
- ✗ Slow
- ✗ Dangerous when carrying equipment

### ADJUSTASTAIRS

- ✓ Provides stair access direct to roof
- ✓ Ideal for carrying long loads
- ✓ Cost effective
- ✓ Fast & easy to set up

Prices start at  
**\$1,000 + GST**

Stair options  
from **0.9mH** right  
through to **4.1mH**

## CANTIDECK RENTAL RATES



PRODUCT CODE	DESCRIPTION	PRICE
SR22-4-6	CANTIDECK SUPER ROLLING PLATFORM 2.2M	<b>\$25.00</b> PER DAY
SR29AF-4-6	CANTIDECK SUPER ROLLING PLATFORM 2.9M	<b>\$27.50</b> PER DAY
SR35AF-4-6	CANTIDECK SUPER ROLLING PLATFORM 3.5M	<b>\$30.00</b> PER DAY





**SAFESMART**  
**ACCESS**

*Reaching new heights*

NZ 0800 000 448

[www.safesmartaccess.co.nz](http://www.safesmartaccess.co.nz) | [sales@safesmartaccess.co.nz](mailto:sales@safesmartaccess.co.nz)

## **SAFESMART ACCESS TERMS & CONDITIONS**

Valid pricing excludes GST and freight. Offers are valid until 31st December 2024 unless stated otherwise.

All promotions must be quoted at the time of purchase to receive a promotional offer.

Not applicable to retrospective or future orders.